

326 Steeplechase Drive (Lot 115) - \$239,900
Floor Plan 2103B ~ 4 Bedrms - 2 Baths



REPRESENTATIVE PHOTO

| Heated & Cooled Areas | |
|-----------------------|--------------------------|
| 2103 | Total Heated Sq Ft |
| | |
| Unheated Areas | |
| 429 | Garage Sq Ft |
| 57 | Front Porch Sq Ft |
| 156 | Covered Back Porch Sq Ft |
| 642 | Total Unheated Sq Ft |

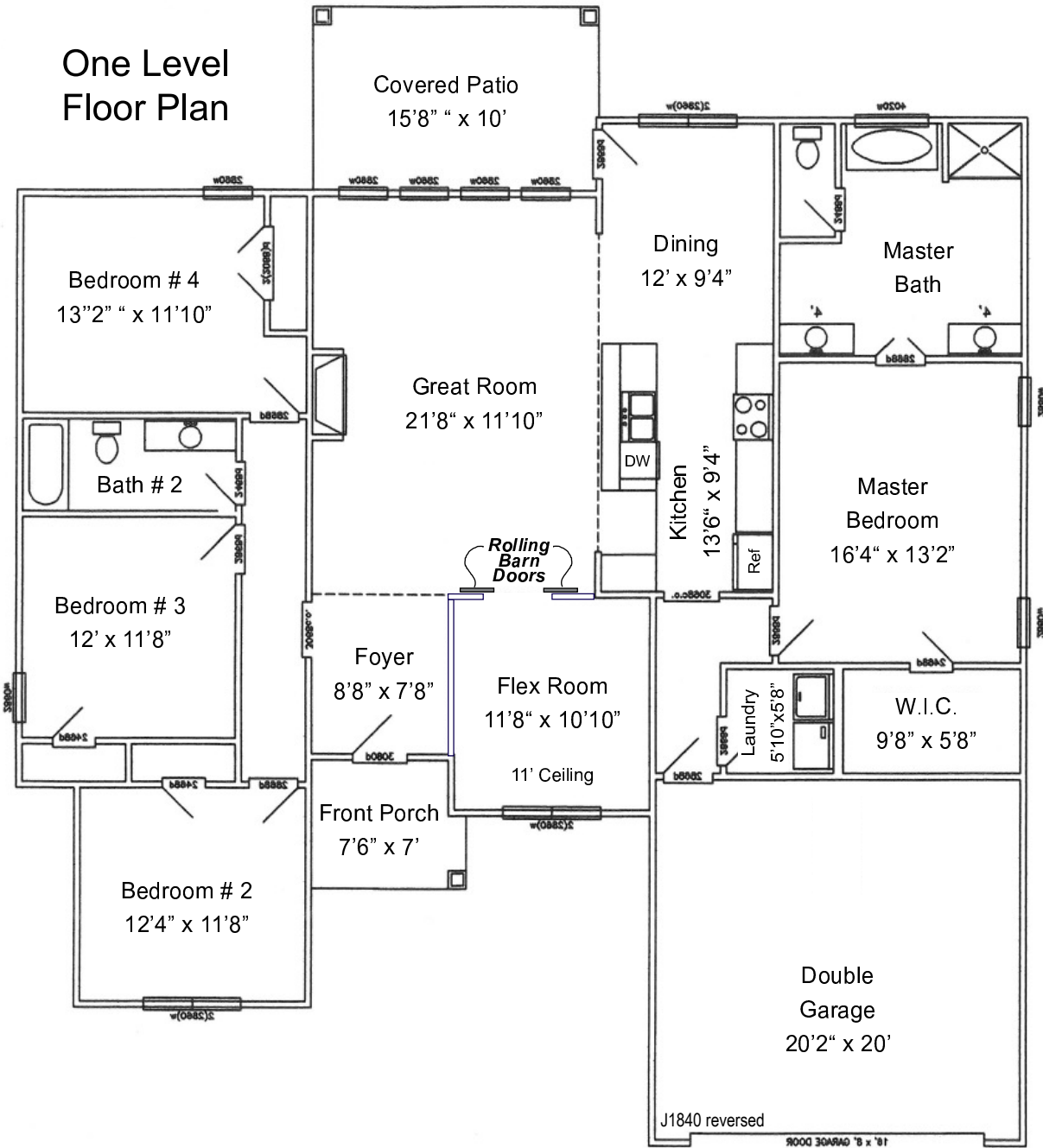
| Amenities |
|--|
| Stainless Appliances |
| Electric Self Clean Range/Oven |
| Dishwasher, Microwave Venthood, Disposal |
| Hardwood in Foyer, Dining Rm, Great Rm & Kitchen |
| Ceramic Tile in Laundry & Baths |
| Custom Cabinets with Soft Close Doors & Drawers |
| Custom Closet Shelving vs wire shelving |
| Granite Counters in Kitchen & All Baths |
| Modern Freestanding Master Tub |
| Gas Logs in Great Rm |
| Gas Heat and Water Heater |
| Hard Piped Ductwork vs Flex Ductwork |

For More Info Call:
Lee Godfrey, Broker
Coldwell Banker
Real Estate Now
731.343.2900 Cell
731.664.1000 Direct
731.668.1777 Office

Quality Built Homes By:
Jeff Baker &
Brad Presson

Floor Plan 2103B

One Level Floor Plan



Disclaimer
Please be advised Room Sizes and Square Footage in this brochure are approximate and are not guaranteed by the Builder or Agent. Actual onsite dimensions may vary from this brochure. Builder may elect to make changes to the floor plan or elevations of the house during construction.