

326 Steeplechase Drive (Lot 115) - \$239,900
Floor Plan 2103B ~ 4 Bedrms - 2 Baths



Heated & Cooled Areas	
2103	Total Heated Sq Ft
Unheated Areas	
429	Garage Sq Ft
57	Front Porch Sq Ft
156	Covered Back Porch Sq Ft
642	Total Unheated Sq Ft

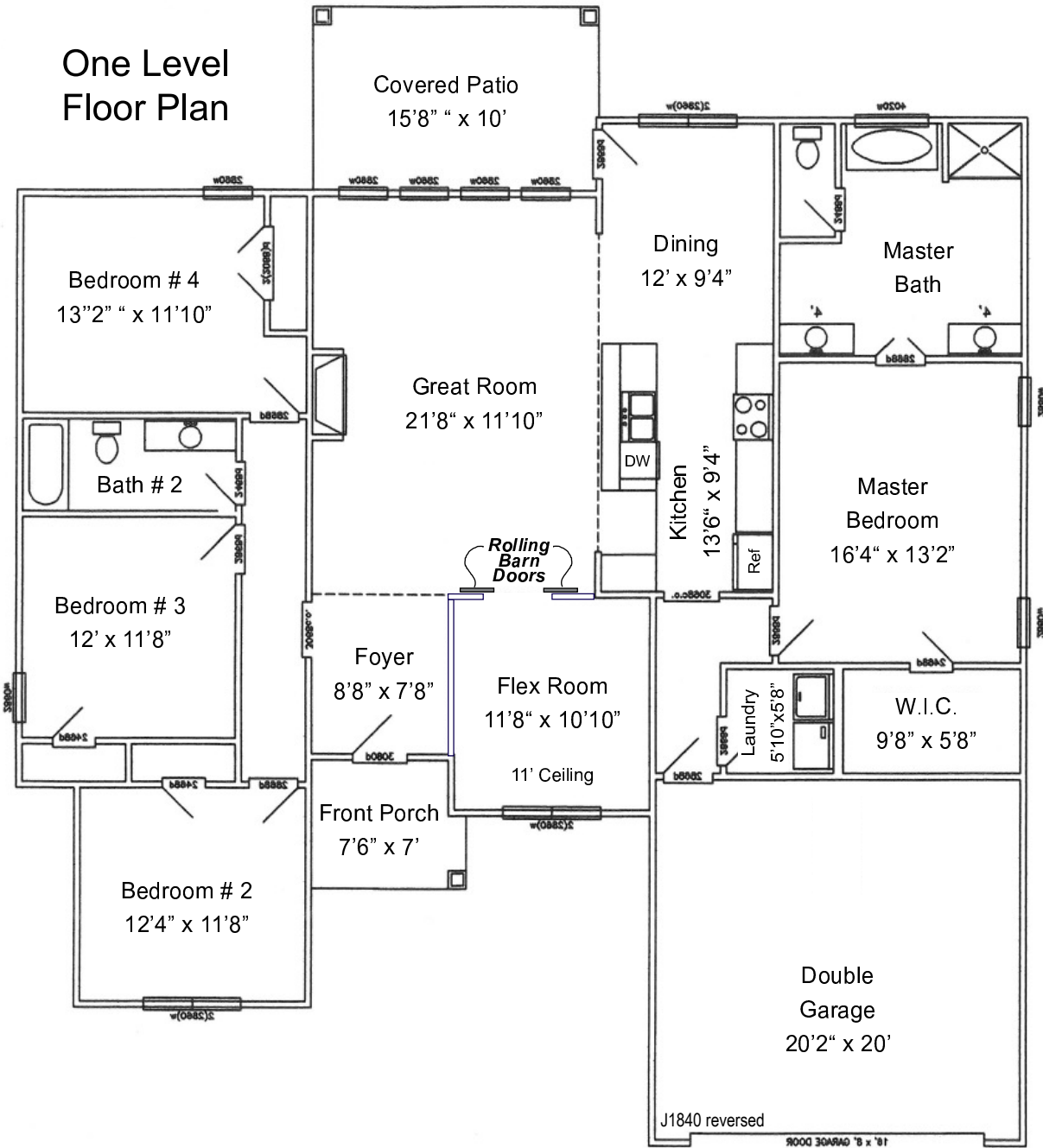
Amenities
Stainless Appliances
Electric Self Clean Range/Oven
Dishwasher, Microwave Venthood, Disposal
Hardwood in Foyer, Dining Rm, Great Rm & Kitchen
Ceramic Tile in Laundry & Baths
Custom Cabinets with Soft Close Doors & Drawers
Custom Closet Shelving vs wire shelving
Granite Counters in Kitchen & All Baths
Modern Freestanding Master Tub
Gas Logs in Great Rm
Gas Heat and Water Heater
Hard Piped Ductwork vs Flex Ductwork

For More Info Call:
Lee Godfrey, Broker
Coldwell Banker
Real Estate Now
731.343.2900 Cell
731.664.1000 Direct
731.668.1777 Office

Quality Built Homes By:
Jeff Baker &
Brad Presson

Floor Plan 2103B

One Level Floor Plan



Disclaimer
Please be advised Room Sizes and Square Footage in this brochure are approximate and are not guaranteed by the Builder or Agent. Actual onsite dimensions may vary from this brochure. Builder may elect to make changes to the floor plan or elevations of the house during construction.