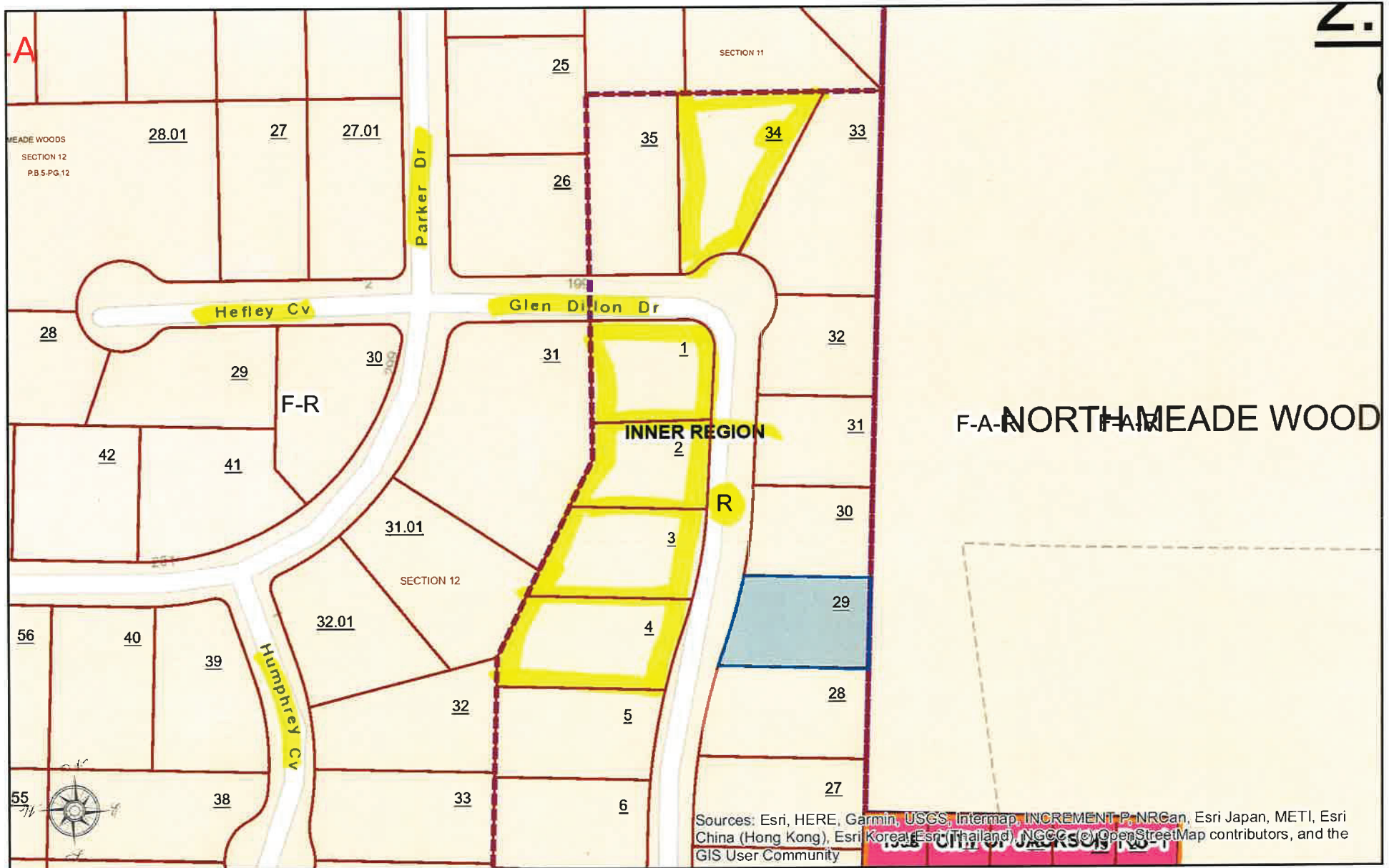


Glen Dillon Dr Zoning Map



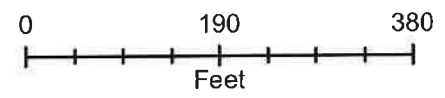
Sources: Esri, HERE, Garmin, USGS, Intermap, INCREMENT P, NRCan, Esri Japan, METI, Esri China (Hong Kong), Esri Korea, Esri (Thailand), NGCC, © OpenStreetMap contributors, and the GIS User Community



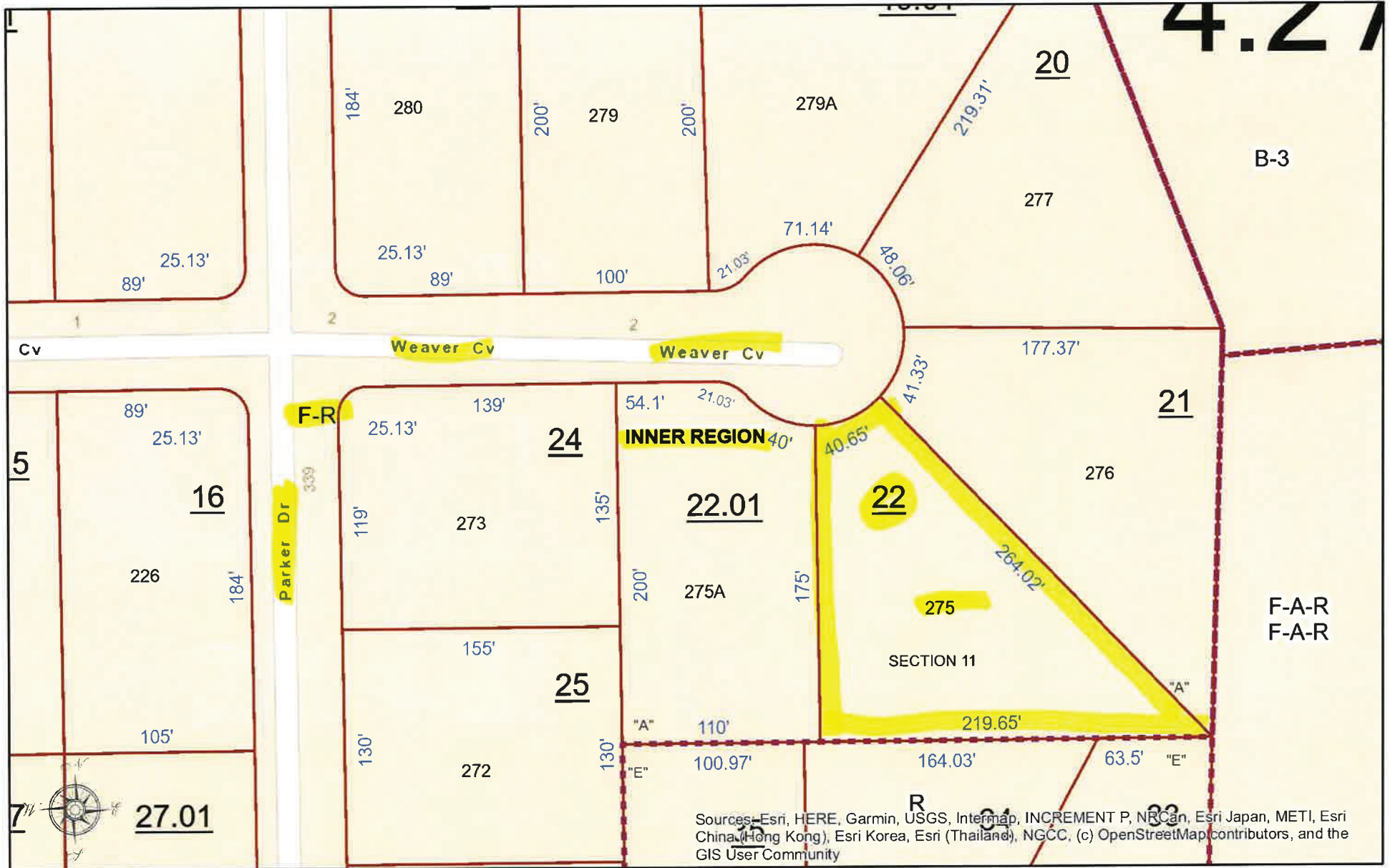
CITY OF JACKSON, TENNESSEE

DISCLAIMER: THIS MAP IS FOR PROPERTY TAX ASSESSMENT PURPOSES ONLY. IT WAS CONSTRUCTED FROM PROPERTY INFORMATION RECORDED IN THE OFFICE OF THE REGISTER OF DEEDS AND IS NOT CONCLUSIVE AS TO LOCATION OF PROPERTY OR LEGAL OWNERSHIP.

MAP DATE: July 27, 2022



Weaver Cv Zoning Map



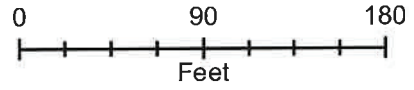
Sources: Esri, HERE, Garmin, USGS, Intermap, INCREMENT P, NRCan, Esri Japan, METI, Esri China (Hong Kong), Esri Korea, Esri (Thailand), NGCC, (c) OpenStreetMap contributors, and the GIS User Community



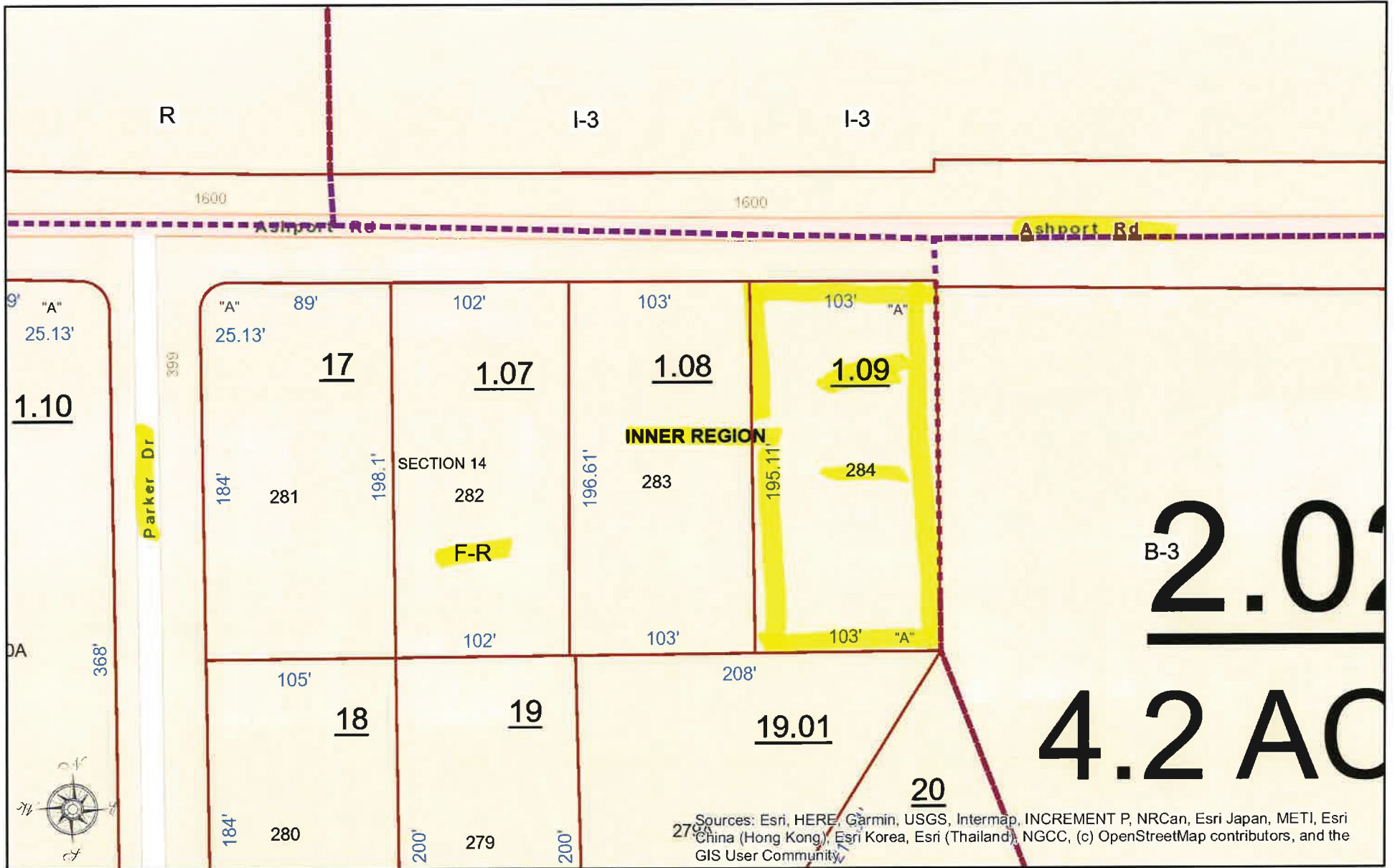
CITY OF JACKSON, TENNESSEE

DISCLAIMER: THIS MAP IS FOR PROPERTY TAX ASSESSMENT PURPOSES ONLY. IT WAS CONSTRUCTED FROM PROPERTY INFORMATION RECORDED IN THE OFFICE OF THE REGISTER OF DEEDS AND IS NOT CONCLUSIVE AS TO LOCATION OF PROPERTY OR LEGAL OWNERSHIP.

MAP DATE: July 27, 2022



Ashport Zoning Map



Sources: Esri, HERE, Garmin, USGS, Intermap, INCREMENT P, NRCan, Esri Japan, METI, Esri China (Hong Kong), Esri Korea, Esri (Thailand), NGCC, (c) OpenStreetMap contributors, and the GIS User Community.



CITY OF JACKSON, TENNESSEE

DISCLAIMER: THIS MAP IS FOR PROPERTY TAX ASSESSMENT PURPOSES ONLY. IT WAS CONSTRUCTED FROM PROPERTY INFORMATION RECORDED IN THE OFFICE OF THE REGISTER OF DEEDS AND IS NOT CONCLUSIVE AS TO LOCATION OF PROPERTY OR LEGAL OWNERSHIP.

MAP DATE: July 27, 2022

