



6 Emerald Breeze Dr. (Lot 209-) - \$359,900
Emerald Breeze Subdivision
3 Bedrms - 2 Baths

Lee Godfrey
Coldwell Banker Southern Realty
731.343.2900 Cell
731.668.1777 Front Desk Main Office

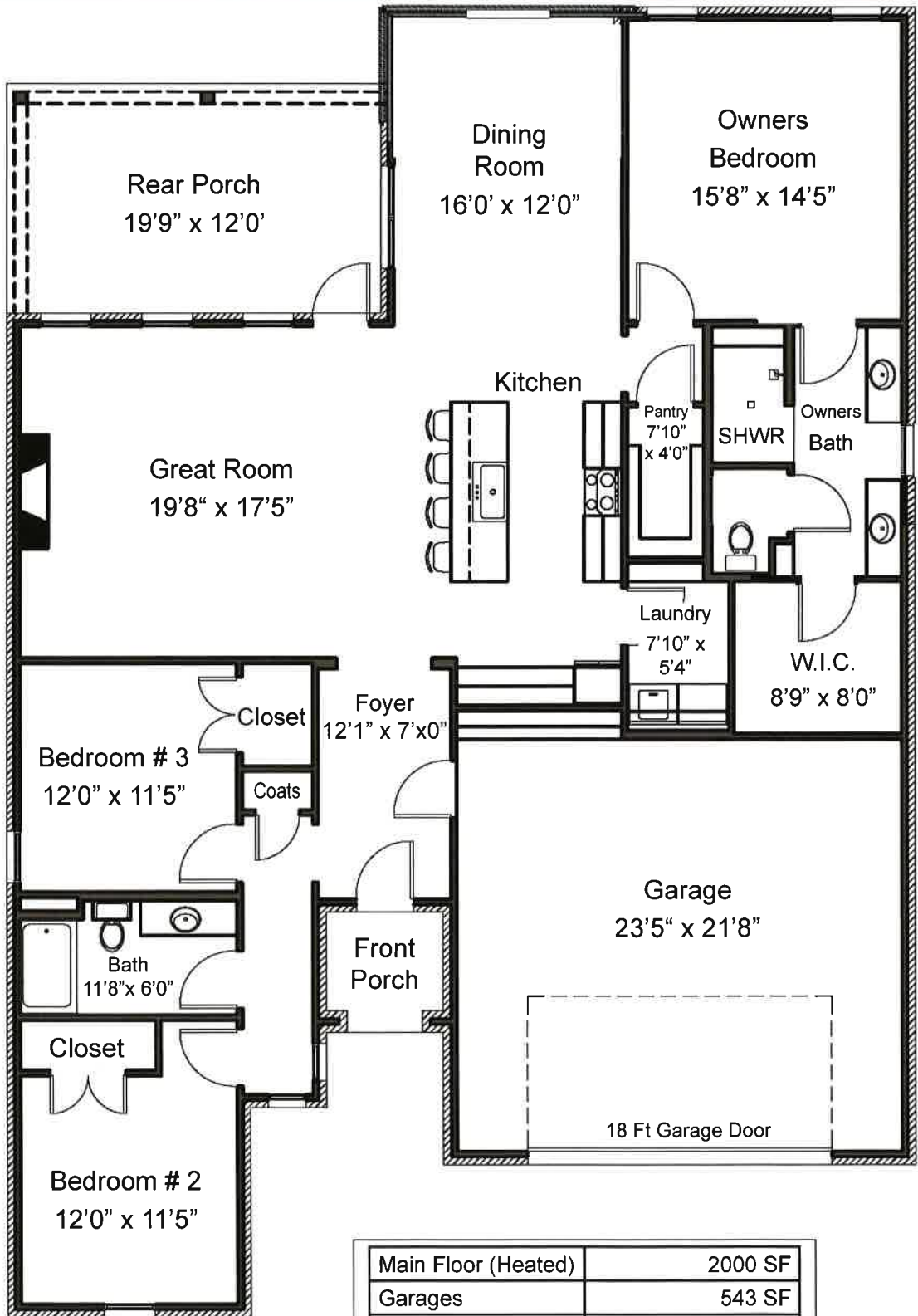
Emerald Breeze Amenities

- Private & Gated Development
- Lawn Care included in HOA fee
- HOA Fee is \$300/Quarter
- Wooded Walking Trail
- Architecture by: THE DESIGN SHOP
- Fresh Original Open Floor Plans
- 9-11 Ft Ceiling Heights
- Split Bedroom Plans
- Separate Laundry Rooms
- Covered Patios & Double Garages

Home Features

Stainless Appliances
Natural Gas Self Clean Range/Oven
Dishwasher, Microwave Venthood, Disposal
Ceramic Tile in Laundry & Baths
Luxury Vinyl Plank throughout the rest of the house
Walk-N-Ceramic Shower
Custom Cabinets with Soft Close Doors & Drawers
Custom Closet Shelving vs wire shelving
Granite Counters in Kitchen & All Baths
Gas Logs in Great Rm
Gas Heat and Water Heater
Oversize Garage with 18 Ft Garage Door

One Level Floor Plan



Main Floor (Heated)	2000 SF
Garages	543 SF
Porches	280 SF
Total Unheated	823 SF
Total Under Roof	2783 SF

Disclaimer

Please be advised Room Sizes and Square Footage in this brochure are approximate and are not guaranteed by the Builder or Agent. Actual onsite dimensions may vary from this brochure. Builder may elect to make changes to the floor plan or elevations of the house during construction without notice.