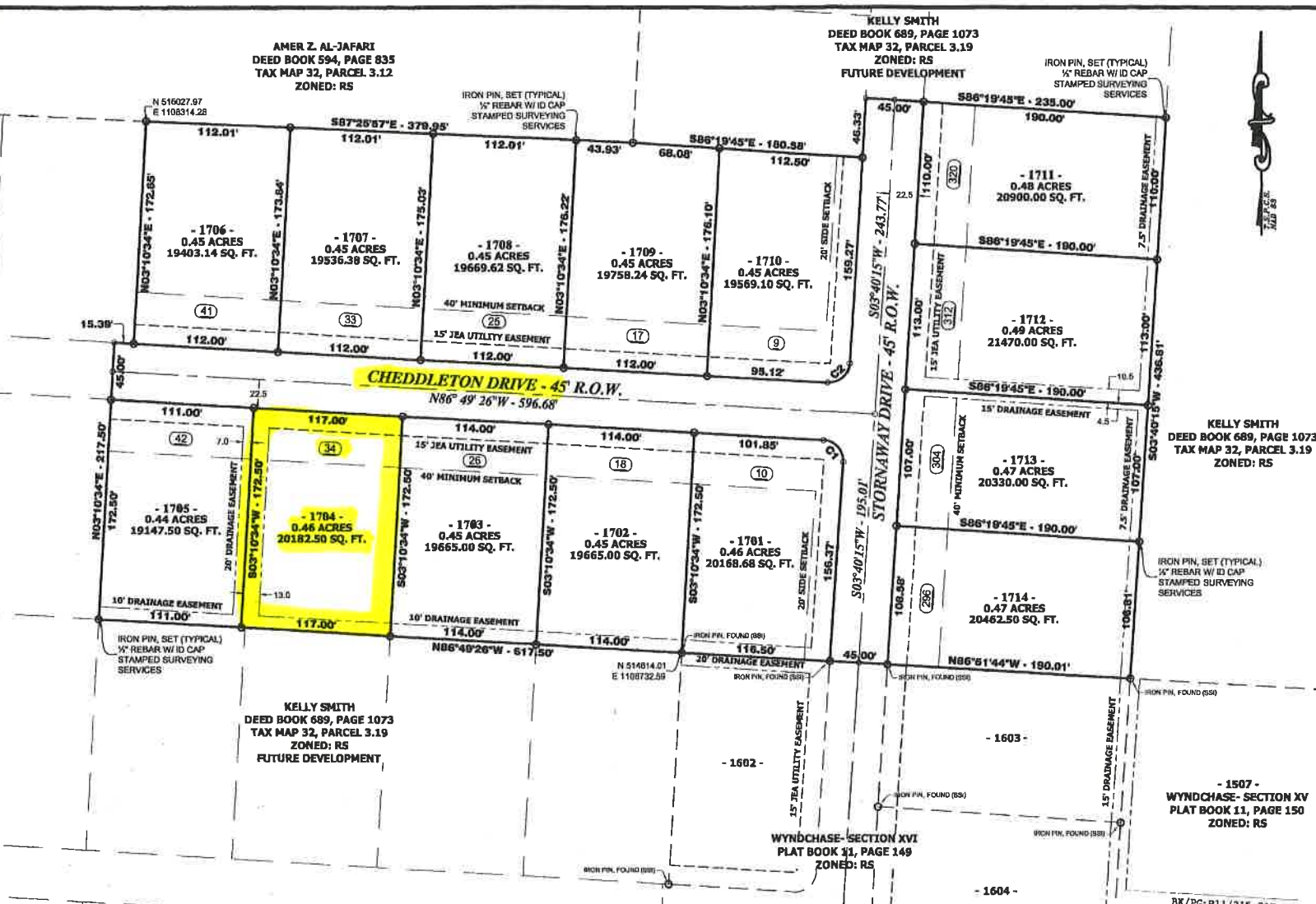


AMER Z. AL-JAFARI
DEED BOOK 594, PAGE 835
TAX MAP 32, PARCEL 3.12
ZONED: RS

KELLY SMITH
DEED BOOK 689, PAGE 1073
TAX MAP 32, PARCEL 3.19
ZONED: RS
FUTURE DEVELOPMENT

IRON PIN, SET (TYPICAL)
1/2" REBAR W/ID CAP
STAMPED SURVEYING SERVICES



KELLY SMITH
DEED BOOK 689, PAGE 1073
TAX MAP 32, PARCEL 3.19
ZONED: RS

IRON PIN, SET (TYPICAL)
1/2" REBAR W/ID CAP
STAMPED SURVEYING SERVICES

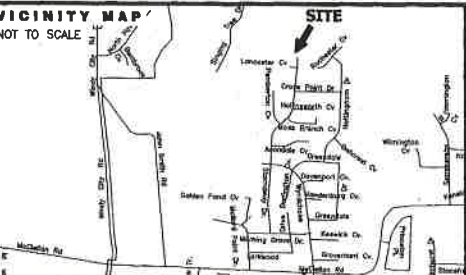
- 1507 -
WYNDCHASE- SECTION XV
PLAT BOOK 11, PAGE 150
ZONED: RS

BK/PG: P11/215-215
13015247

NO.	DESCRIPTION	DATE	AMOUNT
1	PLAT	11/17/2009	2.00
2	REBAR W/ID CAP	11/17/2009	0.00
3	STAMPED SURVEYING	11/17/2009	15.00
4	IRON PIN, SET	11/17/2009	2.00
5	STAMPED SURVEYING	11/17/2009	2.00
6	IRON PIN, SET	11/17/2009	2.00
7	STAMPED SURVEYING	11/17/2009	2.00
8	IRON PIN, SET	11/17/2009	2.00
9	STAMPED SURVEYING	11/17/2009	2.00
10	IRON PIN, SET	11/17/2009	2.00
11	STAMPED SURVEYING	11/17/2009	2.00
12	IRON PIN, SET	11/17/2009	2.00
13	STAMPED SURVEYING	11/17/2009	2.00
14	IRON PIN, SET	11/17/2009	2.00
15	STAMPED SURVEYING	11/17/2009	2.00
16	IRON PIN, SET	11/17/2009	2.00
17	STAMPED SURVEYING	11/17/2009	2.00
18	IRON PIN, SET	11/17/2009	2.00
19	STAMPED SURVEYING	11/17/2009	2.00
20	IRON PIN, SET	11/17/2009	2.00
21	STAMPED SURVEYING	11/17/2009	2.00
22	IRON PIN, SET	11/17/2009	2.00
23	STAMPED SURVEYING	11/17/2009	2.00
24	IRON PIN, SET	11/17/2009	2.00
25	STAMPED SURVEYING	11/17/2009	2.00
26	IRON PIN, SET	11/17/2009	2.00
27	STAMPED SURVEYING	11/17/2009	2.00
28	IRON PIN, SET	11/17/2009	2.00
29	STAMPED SURVEYING	11/17/2009	2.00
30	IRON PIN, SET	11/17/2009	2.00
31	STAMPED SURVEYING	11/17/2009	2.00
32	IRON PIN, SET	11/17/2009	2.00
33	STAMPED SURVEYING	11/17/2009	2.00
34	IRON PIN, SET	11/17/2009	2.00
35	STAMPED SURVEYING	11/17/2009	2.00
36	IRON PIN, SET	11/17/2009	2.00
37	STAMPED SURVEYING	11/17/2009	2.00
38	IRON PIN, SET	11/17/2009	2.00
39	STAMPED SURVEYING	11/17/2009	2.00
40	IRON PIN, SET	11/17/2009	2.00
41	STAMPED SURVEYING	11/17/2009	2.00
42	IRON PIN, SET	11/17/2009	2.00
43	STAMPED SURVEYING	11/17/2009	2.00
44	IRON PIN, SET	11/17/2009	2.00
45	STAMPED SURVEYING	11/17/2009	2.00
46	IRON PIN, SET	11/17/2009	2.00
47	STAMPED SURVEYING	11/17/2009	2.00
48	IRON PIN, SET	11/17/2009	2.00
49	STAMPED SURVEYING	11/17/2009	2.00
50	IRON PIN, SET	11/17/2009	2.00
51	STAMPED SURVEYING	11/17/2009	2.00
52	IRON PIN, SET	11/17/2009	2.00
53	STAMPED SURVEYING	11/17/2009	2.00
54	IRON PIN, SET	11/17/2009	2.00
55	STAMPED SURVEYING	11/17/2009	2.00
56	IRON PIN, SET	11/17/2009	2.00
57	STAMPED SURVEYING	11/17/2009	2.00
58	IRON PIN, SET	11/17/2009	2.00
59	STAMPED SURVEYING	11/17/2009	2.00
60	IRON PIN, SET	11/17/2009	2.00
61	STAMPED SURVEYING	11/17/2009	2.00
62	IRON PIN, SET	11/17/2009	2.00
63	STAMPED SURVEYING	11/17/2009	2.00
64	IRON PIN, SET	11/17/2009	2.00
65	STAMPED SURVEYING	11/17/2009	2.00
66	IRON PIN, SET	11/17/2009	2.00
67	STAMPED SURVEYING	11/17/2009	2.00
68	IRON PIN, SET	11/17/2009	2.00
69	STAMPED SURVEYING	11/17/2009	2.00
70	IRON PIN, SET	11/17/2009	2.00
71	STAMPED SURVEYING	11/17/2009	2.00
72	IRON PIN, SET	11/17/2009	2.00
73	STAMPED SURVEYING	11/17/2009	2.00
74	IRON PIN, SET	11/17/2009	2.00
75	STAMPED SURVEYING	11/17/2009	2.00
76	IRON PIN, SET	11/17/2009	2.00
77	STAMPED SURVEYING	11/17/2009	2.00
78	IRON PIN, SET	11/17/2009	2.00
79	STAMPED SURVEYING	11/17/2009	2.00
80	IRON PIN, SET	11/17/2009	2.00
81	STAMPED SURVEYING	11/17/2009	2.00
82	IRON PIN, SET	11/17/2009	2.00
83	STAMPED SURVEYING	11/17/2009	2.00
84	IRON PIN, SET	11/17/2009	2.00
85	STAMPED SURVEYING	11/17/2009	2.00
86	IRON PIN, SET	11/17/2009	2.00
87	STAMPED SURVEYING	11/17/2009	2.00
88	IRON PIN, SET	11/17/2009	2.00
89	STAMPED SURVEYING	11/17/2009	2.00
90	IRON PIN, SET	11/17/2009	2.00
91	STAMPED SURVEYING	11/17/2009	2.00
92	IRON PIN, SET	11/17/2009	2.00
93	STAMPED SURVEYING	11/17/2009	2.00
94	IRON PIN, SET	11/17/2009	2.00
95	STAMPED SURVEYING	11/17/2009	2.00
96	IRON PIN, SET	11/17/2009	2.00
97	STAMPED SURVEYING	11/17/2009	2.00
98	IRON PIN, SET	11/17/2009	2.00
99	STAMPED SURVEYING	11/17/2009	2.00
100	IRON PIN, SET	11/17/2009	2.00

NUMBER	CHORD DIRECTION	CHORD LENGTH	RADIUS	LENGTH	DELTA
C1	S41°34'36"E	22.72'	16.00'	25.27'	090°29'41"
C2	S48°25'24"W	22.55'	16.00'	24.99'	089°30'19"

STREET NAME	STREET LENGTH	PAVEMENT WIDTH	PAVEMENT AREA	R.O.W. WIDTH	CURB-GUTTER LENGTH	SIDEWALK AREA
STORNAWAY DRIVE	438.78'	28'	11,870 S.F.	45'	838.14'	N/A
CHEDDLETON DRIVE	696.88'	28'	14,882 B.F.	45'	1,151.57'	N/A



NOTES:
This survey was prepared without benefit of an abstract of title. No liability is assumed by the undersigned for loss relating to any matter that might be discovered by an abstract or title search of the property.

All deed book references shown hereon are recorded in the Register's Office of Madison County, Tennessee.

All iron pins set are 1/2" rebar with an identification cap stamped Surveying Services.

This property is not located in Special Flood Hazard Area per Flood Insurance Rate Map, Map No. 47113C0134E, Effective Date: August 3, 2009.

The Maintenance Agreement and/or Restrictive Covenants for the property shown hereon are recorded in Trust Deed Book _____ Page _____

CERTIFICATE:
I hereby certify that this is a Category I Survey and that the ratio of precision of the unadjusted survey is 1:10,000 as shown hereon. This survey is correct to the best of my knowledge and belief.

OWNER INFORMATION:
S & J PARTNERS II
P.O. BOX 12355
JACKSON, TN 38308
TAX MAP 32, PARCEL 3.60
DEED BOOK 719, PAGE 1588

ZONING INFORMATION:
ZONED: RS
(SINGLE FAMILY RESIDENTIAL)

SETBACKS:
FRONT: 40 FEET MINIMUM
SIDE: 12 FEET MINIMUM
REAR: 20 FEET MINIMUM

LEGEND:
 END POINT OF LINE
 IP" IRON PIN, FOUND
 IPS IRON PIN, SET

Approved by Jackson
Municipal Regional
Planning Commission
Date 11/7/2009 E.H.

BENCHMARK NOTE:
The benchmark for the property shown hereon is a PK nail in the western curb of Stornaway Drive near the southeast corner of Lot 1303 of Wyndchase - Section XII, N 51378.02, E 1108816.18, ELEV 427.23